

UPOS-211 Series

15" Ubiquitous POS Terminal

UPOS-211D with Intel® BayTrail J1900

UPOS-211F with Intel® Skylake Core i3 / i5 / Celeron

UPOS-211K with Intel Alder lake N305/N97/N50



DeviceOn/iService

Features

- Equipped with DeviceOn / iService software for remote device management
- 15" TFT LCD (LED backlight) with 5 wire Resistive or PCAP Touch
- Built in Intel Baytrail J1900, Skylake-U or Alder lake-N
- Stylish design with dual hinge, thinner boarder, slim screen
- Clear Cable Management
- Low power & fanless operation without heat ventilation holes
- Easy access to key components
- Easy peripheral mount design integrated
- Device Options: 2nd Display, MSR, VFD, RFID, Barcode Scanner
- Fully support WISE-PaaS/DeviceON



Introduction

UPOS-211 is an All-in-One POS System with 15" true-flat PCAP touch or 5 wire Resistive touch. It is with Intel Baytrail, Skylake-U or Alder lake -N processor, fanless design with quiet operation and energy saving. It features dual hinge design which provides the smallest footprint to save counter space and reduce shipment freight. It provides easy access to key components. UPOS-211 supports both Windows and Android OS, and the front panel is with IP65 design, supports water and dust resistance, specific designed for Mini market store, Food merchandise, Convenience store, Specialty store. UPOS-211 is with the most competitive cost, and energy effective platform built for retail and hospitality.

Moreover, UPOS-211 is equipped with Advantech's DeviceOn/iService software, which is a next-generation unified device management solution based on the WISE-DeviceOn platform. With support for batch operations and multi-device control, DeviceOn/iService enables easy device configuration and deployment for convenient remote device management.

Features Highlight



Foldable design with dual hinge

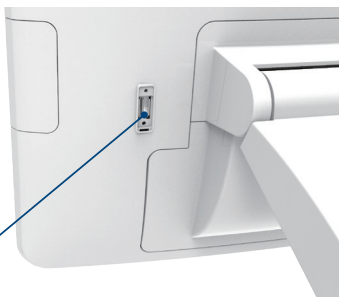


Tilt motion, 0~90 °C Freestyle rotation

- 1xUSB port on backside w/ rubber cover
- Screwed bracket design for USB port to ensure data security (Optional)



Easy Access to USB Port



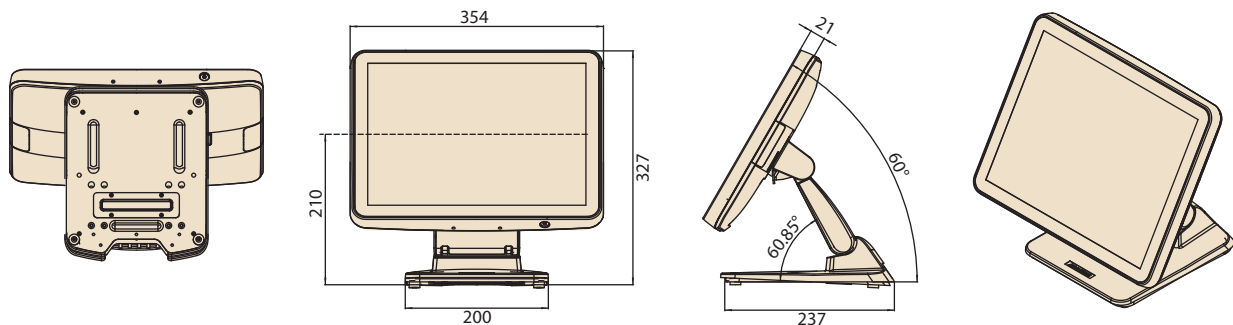
Wall Mount, via VESA mount kit

Specifications

Model	UPOS-211D		UPOS211F	UPOS-211K
Processor	Intel Bay Trail Quad Core J1900, 2GHz up to 2.42GHz		Skylake-U, i5-6300U/CORE i3-6100U/Celeron 3955U	Intel Alder lake N97/N50/Core i3-N305
Memory	Technology	DDR3L-1333	DDR4-2133	DDR5-4800
	Max. Capacity	8G	16G	16G
	Socket	1 x 204 pin SO-DIMM	1 x 260 pin SO-DIMM	1 x 262 pin SO-DIMM
Storage	1 x 2.5" SATA HDD/SSD connector, SATA2 (3.0Gb/S)		1 x 2.5" SATA HDD/SSD connector, SATA3 (6.0Gb/S)	1 x 2.5" SATA HDD/SSD connector, SATA3
Panel	15" TFT LCD Display (1024 x 768), 300 cd/m ²			
Touch Screen	15", Analog Resistive 5-wires (Res. Flat Glass) / Projected Capacitive Touch Panel (PCAP, Flat Glass) Light Transmission: Res. Touch 80% ±5% / Pcap Touch 85% ±3%			Projected Capacitive Touch Panel (PCAP, Flat Glass) Light Transmission: Pcap Touch 85% ±3%
Bus Expansion	1 x Mini PCIe (for Wifi or 3G), shared with mini SATA connector			1 x M.2 2230 E-KEY for Wifi&BT 1 x M.2 M Key 2280(SATA)
Audio	1 x 2W speaker installed. Line out/Mic-in (optional)			
Power Supply	60W power adapter			65W power adapter
Serial Port	External: 2 x COM RS232 ports on I/O board via RJ-48 connector, COM1 / COM2 support 5V & 12V by order Internal: 4 x COM port, COM3 for 5W Res. touch, COM4, COM5 support 5V & 12V by order, COM6 no power			2 x COM RS232 ports on I/O board via RJ-48 connector, COM1 support 5V & 12V by order
USB Port	External: 2 x USB2.0; 1 x USB3.0; 5 x USB 2.0 ports (optional) Internal: 3 x USB2.0 (1x USB for PCAP touch)		External: 2 x USB3.0, 1 x USB2.0; 5 x USB2.0 (optional) Internal: 3 x USB2.0 (1 x USB for PCAP touch)	External: 2 x USB 3.2; 3 x USB 2.0; Type-C1 for USB3.2 Gen2+Display (5V/3A) ; Type-C2 for USB 3.2 Gen1; Type-C3 for DC-IN Internal: 1 x USB 2.0 (for PCAP touch), 1 x USB2.0 (for MSR)
Ethernet	LAN controller: Realtek RTL8111G-CG, 1x RJ-45 Gigabit Ethernet			LAN 2x RJ-45(2.5G)
Display Output	External: 1 x VGA Internal: 1 x VGA (for 10" 2nd Display)		1 x VGA, 1 x DP	External:1 x USB-C(for 2nd Display)
Cash Drawer	1 x RJ11, cash drawer, 24V default, 12V by order			1 x RJ11, cash drawer, 20V default, 12V by order
PS2	1 x PS2 (for MSR only)			/
Parallel Port	/		1 x LPT (optional)	/
DC-In	12V			20V
IP65	IP65 front panel protection			
Dimension (W x H x D)	354 x 327 x 237 mm, Stand: 237 x 200 mm			
Weight	5.2KG (Net weight) / 6.9KG (Gross weight)			
Operating Temp.	0 ~ 40° C			
Relative Humidity	95%RH Max @ 40° C non-condensing			
Shock	10G peak acceleration (11ms duration)			
Vibration	5~500Hz 0.5Grms, random			
EMC / Safety	CE, CCC, UL, FCC, CB/LVD, VCCI, BSMI			
OS Support	POSReady 7, Windows 7 Pro, Windows 8.1 Pro (64-bit), Windows 10 IoT Enterprise, Linux Kernel 3.13 or above Android 4.4 (UPOS-211D series supports Android; UPOS-211F series does not support Android)			Win 10/Win 11/Linux
DeviceOn/iService Remote Device Management	Operating System	Windows 10		
	Common Controls (Reboot, Shutdown)	✓		
	Remote desktop	✓(VNC)		
	Audio controls	✓		
	Connection Status	✓		
	Hardware Status	✓		
	Hard Disk Status	✓		
	Batch Operation Support	✓		
	OTA Storage Management	FTP		
	OTA Software Updates	✓		
	Software Watchlist	✓		
	Software Start/Stop	✓		
Peripherals Watchlist	✓			

Dimensions

Unit: mm



Ordering Information

Part No.	Description
UPOS-211KP-BN900	15",PCAP,ADL N97,8G RAM,Blk, W/O Stand
UPOS-211KP-BN940	15",PCAP,ADL N97,8G RAM,Blk,W/Stand
UPOS-211KP-BI340	15",PCAP,ADL N305,8G RAM,Blk,W/Stand
UPOS-211KP-BN500	15",PCAP,ADL N50,8G RAM,128G,Blk,W/Stand
UPOS-211DP-BST40	15", PCAP, J1900, 4G RAM, 4COM, 5USB, W/Cable, Blk
UPOS-211DP-WST21	15", PCAP, J1900, 4G, 64G SSD, 4COM, 5USB, white
UPOS-211FP-BST40	15", PCAP, i3-6100U, 4G RAM, 4COM, 5USB, W/Cable, Blk
UPOS-211FP-BI520	15", PCAP, i5-6300U, 4G, 64G SSD, 4COM, 5USB, Blk

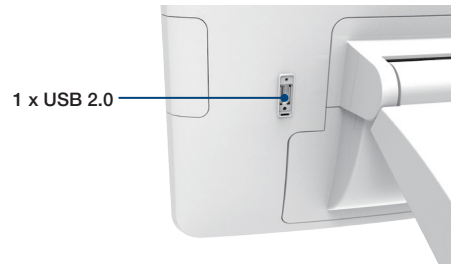
POS Accessory

Part No.	Description
UPOS-211D/F	
96CB-POWER-B-1.8MA	Power Cord (China), 3P 1.8M, BK(CCC)
17AP164900518011	Power Cord CEE 7/16+C13 L1.8M (CE)
1700013977	Power Cord 10A 250V 3P 180/90 CCC 200cm (CCC)
1702002600	Power Cord 3P UL/CSA(USA) 125V 10A 1.83M 180D
1700020098	Power Cord 3P 10A 250V 183CM (Australian)
1702002605	Power Cord 2P FRANCE 10A/16A 220V 1.83M 90D (EU)
1700001714	Power Cord BSMI 3P 7A 125V 18AWG 180CM (BSMI)
1700000237	Power Cord 3P PSE 12A 125V 1.83M (Japan)
1700018704	Power Cord BSI 2P 10A 250V 180cm (UK)
1700025855-01	Power Cord ISI 3P 10A 250V 183cm (INDIA)
UPOS-211K	
EWM-W159M201E	new M.2 2230 WiFi5+BT5.0 module
96CB-POWER-B-1.8MB	Power cable 3P, CCC, 10A, 250V, 180 cm (China)
1700001524	Power cable 3P, UL, 10A, 125V, 180 cm (US, TW)
170203183C	Power cable 3P, 10A, 250V, 183 cm (EU)
1700018553	Power cable 3P, SAA, 2.5A, 250V, 183 cm (Australia)
1700025113-11	Power cable, ISI, 3P, 2.5A, 250V, 180 cm (India)
1700018409	Power cable, KCC, 2P, 2.5A, 250V, 183 cm (Korea,Russia)
170203180A	Power cable, BSI, 3P, 2.5A, 250V, 183 cm (UK)
1700008921	Power cable, PSE, 3P, 7A, 125V, 180 cm (Japan)

POS Peripherals

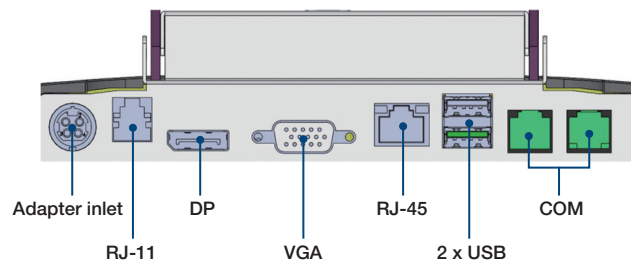
Part No.	Description
USC-P01-B110	VFD, Rear mount, black
USC-P01-B201	VFD,English,2*20,Rear Mount,Blk,USB for UPOS-211K
UPOS-M10G-BST10	10.1" 2nd display, no touch, rear mount for UPOS-211,blk
USC-M3G-BST00	11.6" 2nd display, no touch,pole mount,blk
UPOS-M15G-AST00	15" 4:3 monitor Glass HDMI VGA BK w/cables
USC-P05-B201	2D Barcode scanner,Black for UPOS-211 series
USC-P03-B203	MSR007GH, pin USB,blk,slim, for UPOS-211 series
USC-P03-B201	RFID Scanner for UPOS-211 series
USC-P03-B202	Finger Print Reader for UPOS-211 series
1960080774N003	Vesa Bracket for UPOS-211 Powder Black c
1960080774N004	Vesa Bracket for UPOS-211 Powder White c
1960078502N000	Wall MOUNT BRACKET FOR wall(should order together)
1960078503N000	Wall MOUNT BRACKET FOR unit(should order together)
UPOS-P07-B120	UPOS-211 Pole stand for 2nd display

I/O Interface

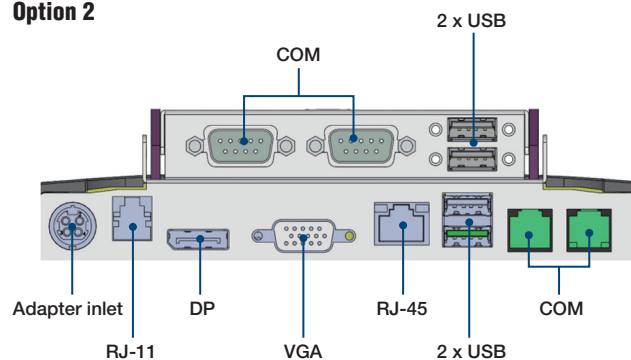


UPOS-210D/UPOS-211F

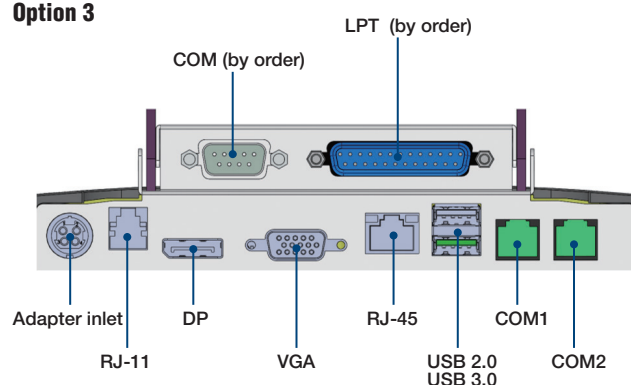
Option 1



Option 2



Option 3

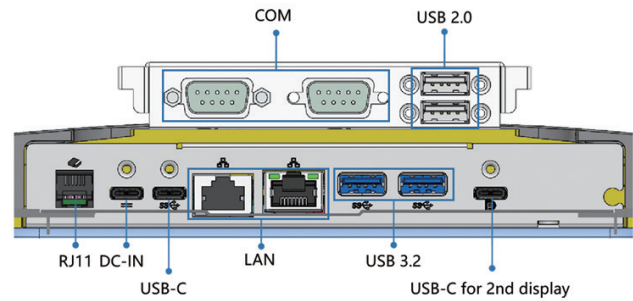


UPOS-211 Series

Operating system

Part No.	Description
2070015279	Image WIN10 LTSP-6 UPOS-211D V1.00 7MUI x64
2070014960	Image POSReady7 UPOS-211D V1.00 5MUI x64
20708WX6HS0002	Image WIN10 LTSP-6-U UPOS-211F(I5) V1.00 7MUI x64
20708AI0NS0001	UPOS-211D V0.9.5 Android Image 444
2070015299	UPOS-211D LUBuntu1604 x64 ENG OS V1.0.1
20708WE7PS0016	Image WES7P UPOS-211D V1.01 5MUI 64Bit
20708WE7PS0017	Image WES7P UPOS-211D V1.01 5MUI 32Bit
20708WE7PS0018	Image WES7P UPOS-211F V1.00 7MUI x64
20708WP7SS0004	Image WIN7PSP1 UPOS-211F V1.00 5MUI x64
20708WP81S0012	Image Win8.1IndustryPro UPOS-211F V1.00 7MUI x64
20708WSR7S0001	Image POSREADY7 UPOS-211F V1.00 5MUI x64

UPOS-211K



DeviceOn/iService

Unified Remote Device Management Software

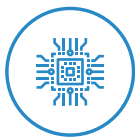


- Supports Advantech devices equipped with Windows, Android, and Linux OS
- Flexible device, location, user, and permissions management
- Enables remote monitoring and control of hardware, software, and peripherals
- Supports over-the-air (OTA) firmware and software updates
- Ensures quick, easy, and secure device onboarding
- RESTful APIs for third-party system integration

Introduction

Advantech's DeviceOn/iService is a next-generation unified device management solution based on the WISE-DeviceOn platform. Designed to enable centralized monitoring and remote management, DeviceOn/iService supports Advantech devices equipped with Windows, Linux, or Android operating systems. The software also supports the management of applications and integrated peripherals, such as a barcode scanner, card reader, camera, and printer. Users can remotely access and control connected devices, take screenshots, rollout OTA upgrades, and use remote desktop capabilities for troubleshooting from any location at any time. Moreover, DeviceOn/iService supports batch operations to facilitate the management of multiple devices simultaneously for easy and convenient device configuration and deployment.

Total Management



Devices & Hardware

- Windows, Linux, Android
- Hardware, storage, battery



Software & Peripherals

- Software monitoring & access
- Screens, USB devices, printers



Open for Expansion

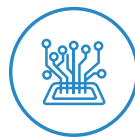
- Peripheral integration
- Open APIs for integration

Remote Access



Real-Time Monitoring

- Connection/hardware status
- Software/peripheral status
- Failure notifications



Remote Controls

- Power controls
- Audio, backlight controls
- Software controls



Troubleshooting

- Screenshots
- Remote desktop support

Operational Efficiency



OTA updates

- System/software updates
- File repository management
- App store



Batch Controls

- 1-to-many batch reboot, etc.
- Time-saving tasks



Setup Booster

- Software/peripheral watchlist
- Roles, rule templates

Note: Some functions may vary according to the product

System Architecture

